

Soller

search for property MAL-122233

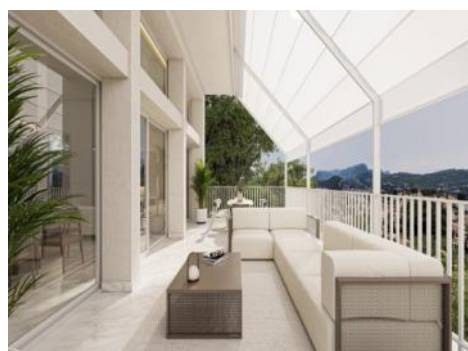


PORTA MONDIAL®

Your home. Our passion.

Plot of land in Pto. Sóller with sea views and housing project with swimming pool

plot area:	589 m ²	water:	-
sea view:	✓		
dev. Potential:	370 m ²		
building permit:	-		
electricity:	-	price:	€ 950,000.-



Soller

search for property MAL-122233



Details:

In the sought-after Port de Sóller is this single-family house project with contemporary design and spaces distributed to offer comfort, privacy and panoramic views.

The property includes roof terrace with swimming pool, 2 habitable floors and basement equipped with wine cellar, gym and sauna.

Distribution:

- Panoramic terrace of more than 80 sqm with private pool.
- Upper floor with kitchen, dining room, living room and porch overlooking the valley and the bay.
- Lower floor with three bedrooms, each with en suite bathroom and orientation to the mountains and the sea.
- Basement with wellness and storage spaces.

The plot, of approximately 590 sqm, is oriented to make the most of the light and views.

It has parking for three vehicles, elevator, underfloor heating, air conditioning, home automation and high quality materials.

A unique opportunity to materialize a high standard home in one of the most sought after locations in Puerto de Sóller, in a privileged environment and with open views to the sea.

The price includes the plot, project and license.

Soller

search for property MAL-122233



Location & surrounding area:

Sóller is an attractive village on the northwest coast of Mallorca, famous for its big fields of orange and lemon groves. It is situated in a solitary valley, which in past times was very difficult to reach overland because of the terrain. From the sea there was an active trade to the Port de Sóller. The golden valley, as it is called, is well worth a visit especially on the local railway.

Soller
search for property MAL-122233



Your home. Our passion.



Terrace



Living



plot-portsoller-project-bedroom



Bathroom



Jacuzzi



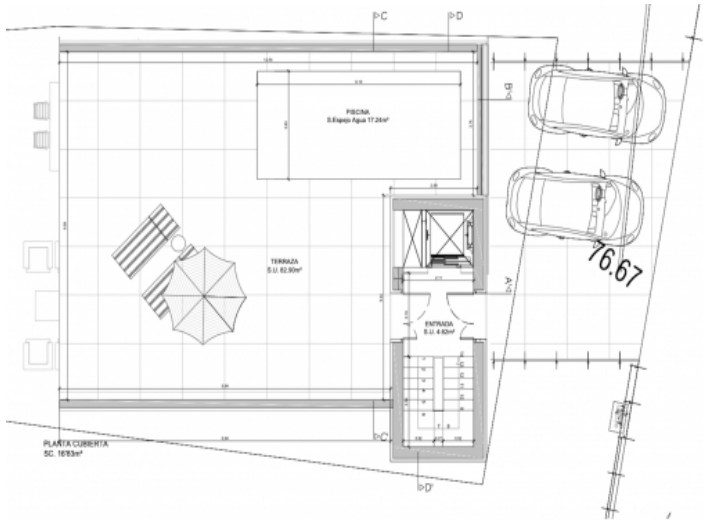
Terrace

Soller
search for property MAL-122233

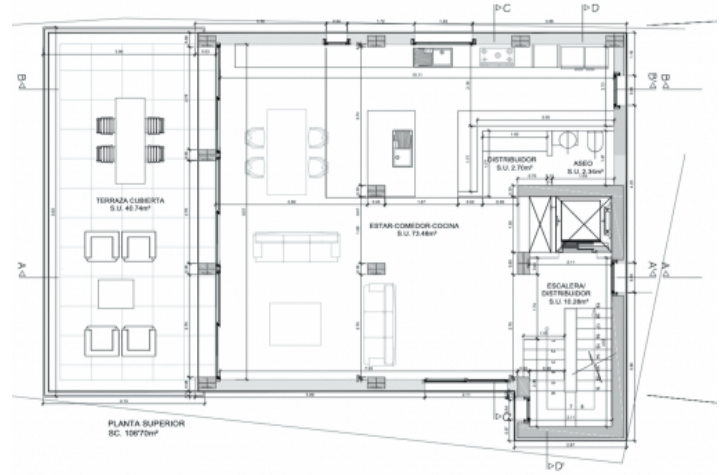


PORTA MONDIAL®

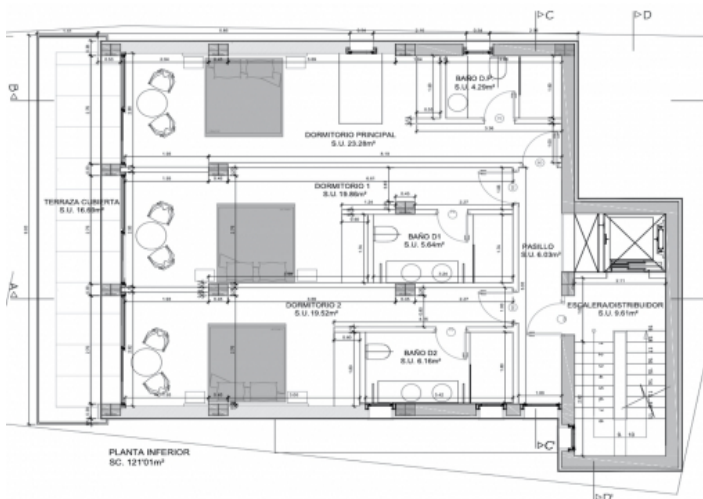
Your home. Our passion.



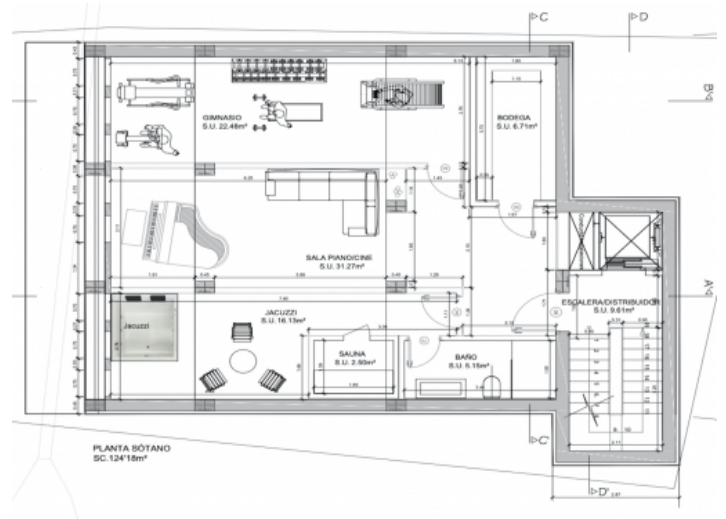
Terrace



Living area



Bedrooms



Basement