

**Bunyola**

search for property MAL-121203



PORTA MONDIAL®

Your home. Our passion.

## Building plot with panoramic views and construction project in Sa Coma de Bunyola

plot area:	1.875 m <sup>2</sup>	water:	-
sea view:	✓		
dev. Potential:	616 m <sup>2</sup>		
building permit:	-		
electricity:	-	price:	€ 585,000.-



**Bunyola**

search for property MAL-121203



## Details:

This spacious plot of almost 1,900 sqm is situated in a privileged location with excellent connections to Palma and the Tramuntana mountains.

Its southeast orientation makes the most of the natural light and offers stunning panoramic views, including the bay of Palma.

With all the necessary permissions, including a building license, this plot is ideal to build your dream home. The project is for an ultra-modern home with large windows and will have a constructed area of 265 sqm spread over two floors. A design that includes 4 bedrooms, gym and large terraces. There will also be parking for 3 cars and an infinity pool to complete this oasis of peace and beauty.

You will also be able to personalize every detail of your new home, from the choice of materials to the finishes, according to your preferences and lifestyle.

The residential area has mains electricity, water and drainage. There is also a fiber optic internet connection and a municipal bus service.

Don't miss out on this unique opportunity and contact us today for more details and to arrange a viewing!

**Bunyola**

search for property MAL-121203



## Location & surrounding area:

This lovely and picturesque village is situated at an altitude of 430 m in the Tramuntana mountains. The high valley has been a popular settlement area since prehistoric times. The Romans and Moores left their traces here. The most popular building is certainly the monastery “Cartuja de Jesús Nazareno”, in which Frederic Chopin and George Sand passed their famous winter months. The saint of the Island Santa Catalina Thómas was born here, and Archduke Luis Salvator of Austria, famous visitor of the Balearic Islands, constructed his beautiful residence Miramar in the surrounding area.



Bunyola

search for property MAL-121203



PORTA MONDIAL®

Your home. Our passion.



Modern architecture



Amazing views



One of 4 bedrooms



Private gym



View on the project



Infinity pool, outdoor kitchen and much more



Bunyola

search for property MAL-121203



PORTA MONDIAL®

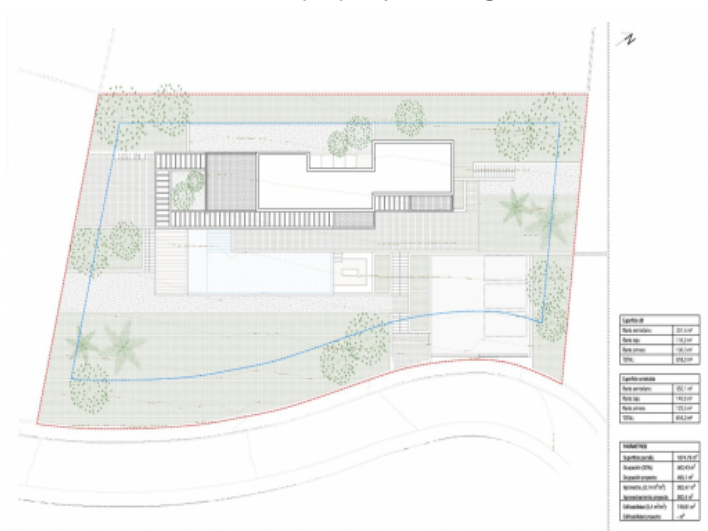
Your home. Our passion.



Aerial view of the property and neighbourhood



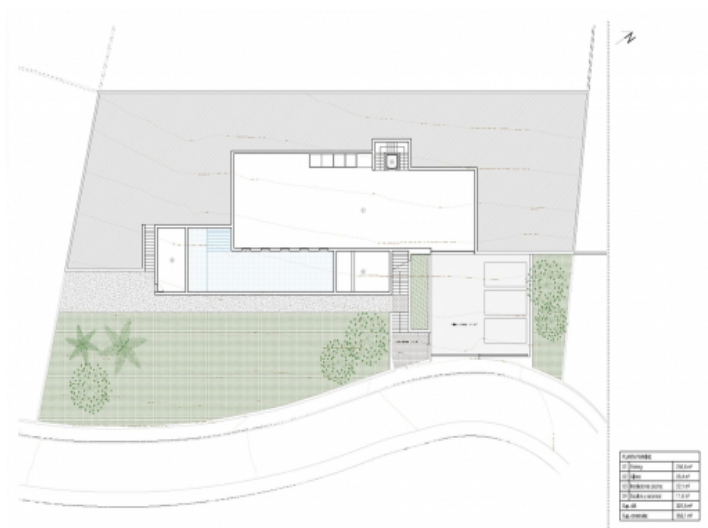
Street and plot



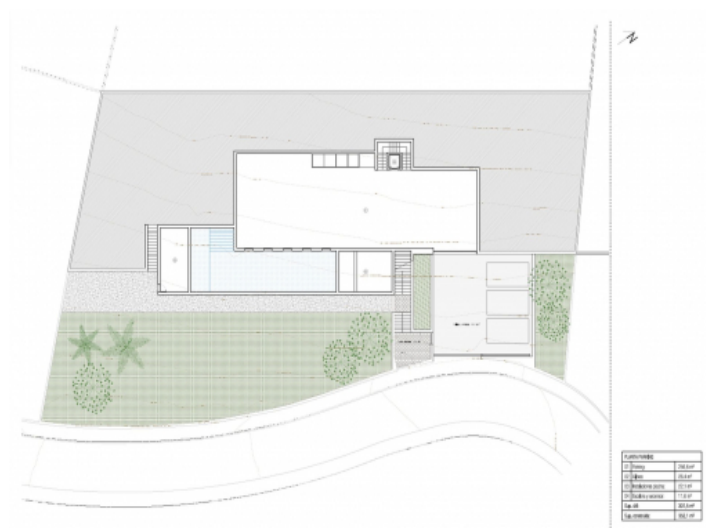
Building plan



Building plan



Garage level



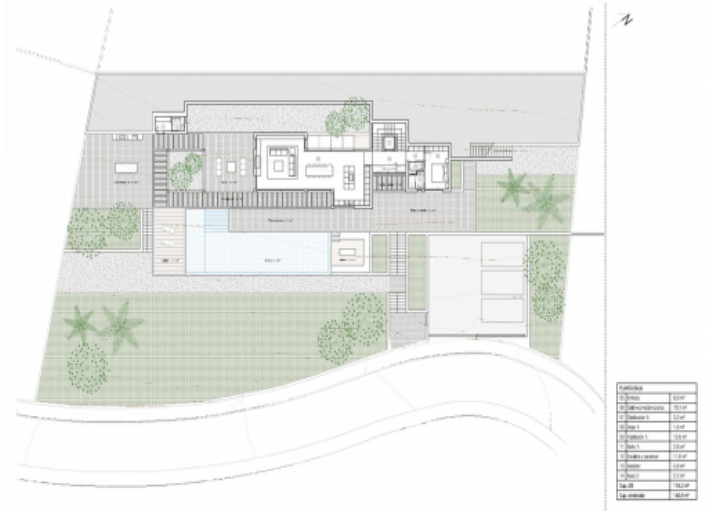
Garage level



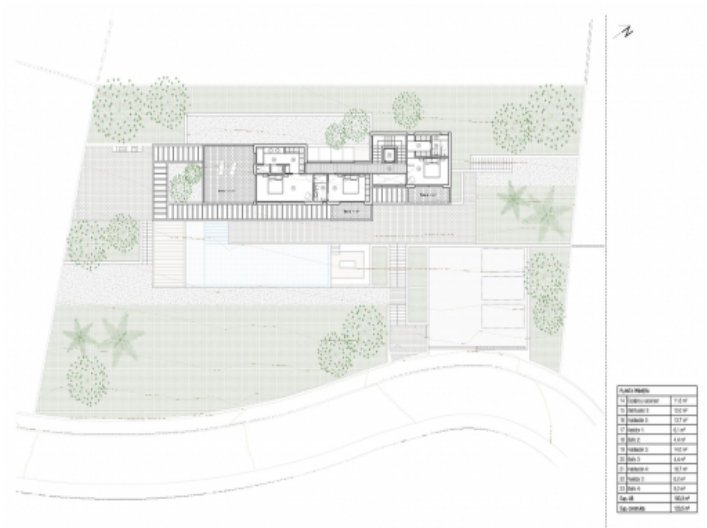
search for property MAL-121203



Your home. Our passion.



## Groundfloor



First floor



Plot