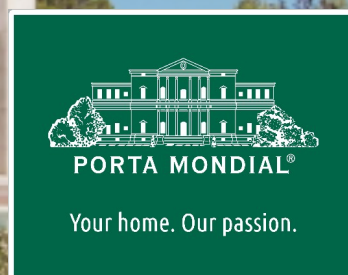


Puig de Ros

search for property MAL-121922



Unique, luxurious villa on the 1st sea line in Puig de Ros

constructed area: 760 m²

energy certificate: c

plot area: 930 m²

bedrooms: 5

bathrooms: 6

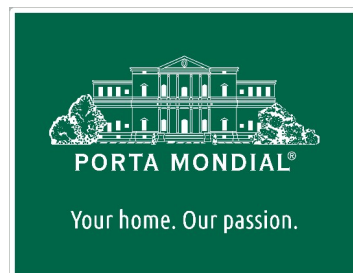
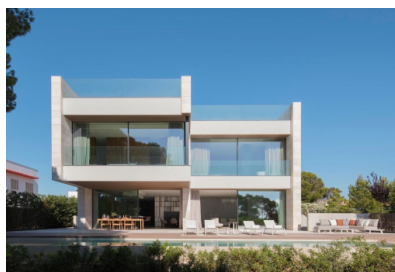
sea view: ✓

price: € 6,900,000.-



Puig de Ros

search for property MAL-121922



Details:

Built in 2020, this absolutely luxurious villa stands on the 1st. line of the sea in a desirable area within easy reach of Palma, and impresses with its exceptional high-quality and the latest home-technology.

Its living space includes 5 bedrooms, all with en-suite bathrooms, a separate guest WC, and an open living/dining area and kitchen leaving no wishes unfulfilled with regards to design and quality.

On the ground floor is the light-flooded, inviting salon with its large window frontages, and a bedroom with bathroom en suite.

Three further spectacular bedrooms with unique bathrooms, dressing rooms, and breathtaking views are situated on the first floor.

On the roof terrace the sauna presents unparalleled sea views.

The lowest level houses a compact studio with a living/sleeping area, bathroom, a tropical patio, the utility room, a large 4-car garage, and the modern house-technology.

The whole house can be controlled by both smart-phone and individual control panels, so that it is possible to oversee and control, for example, the curtains and windows, air conditioning and ventilation etc. from anywhere in the world.

This enchanting, luxurious property truly leaves no design or technology wishes unfulfilled.

Puig de Ros

search for property MAL-121922



Location & surrounding area:

Puig de Ros, which belongs to the municipality of Llucmajor, lies south-east of Palma and provides a contrast to the lively Playa de Palma - Peace and rest are guaranteed here. It is comprised mainly of Apartmentbuildings and villas. Puig de Ros is the ideal starting point for long bicycle tours along the sea's cliff line and into the island's centre. The "Maioris" Golfcourse is immediately near by as well as a large supermarket. The airport and Palma are respectively 15 and 25 minutes away.

Puig de Ros

search for property MAL-121922



PORTA MONDIAL®

Your home. Our passion.



Covered terrace



Pool area



Luxurious living area



Open plan living and dining area



Spacious dining area



Modern live-in kitchen

Puig de Ros

search for property MAL-121922



PORTA MONDIAL®

Your home. Our passion.



Kitchen with seating



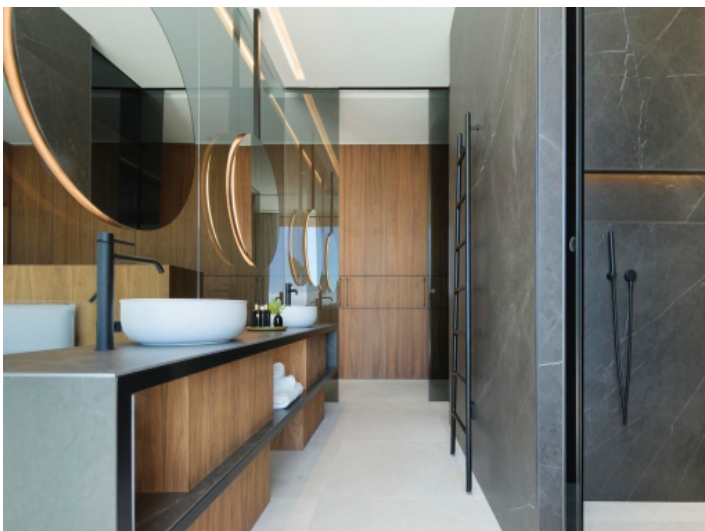
One of 5 bedrooms



One of 5 bedrooms



Dressing room



One of 6 bathrooms



One of 6 bathroom

Puig de Ros

search for property MAL-121922



PORTA MONDIAL®

Your home. Our passion.



One of 6 bathrooms



One of 6 bathrooms



One of 6 bathrooms



Large parking area



Exterior view



View from above

Puig de Ros

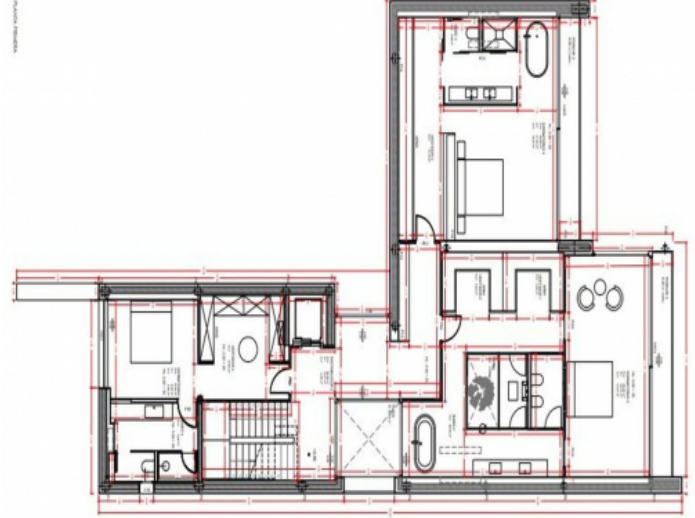
search for property MAL-121922



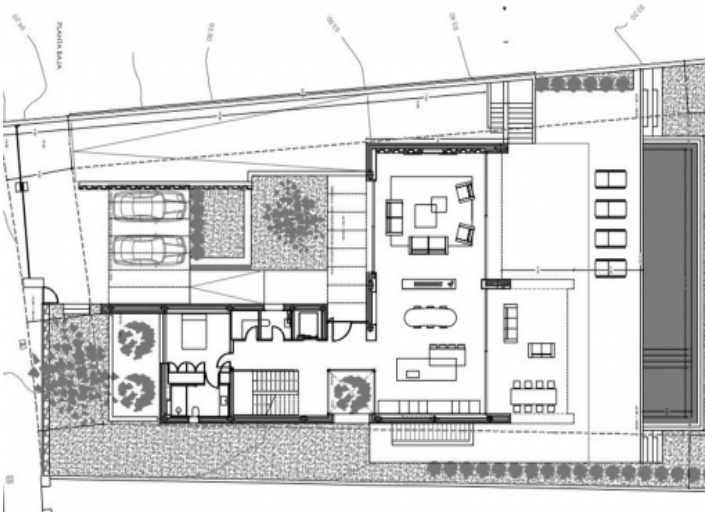
Your home. Our passion.



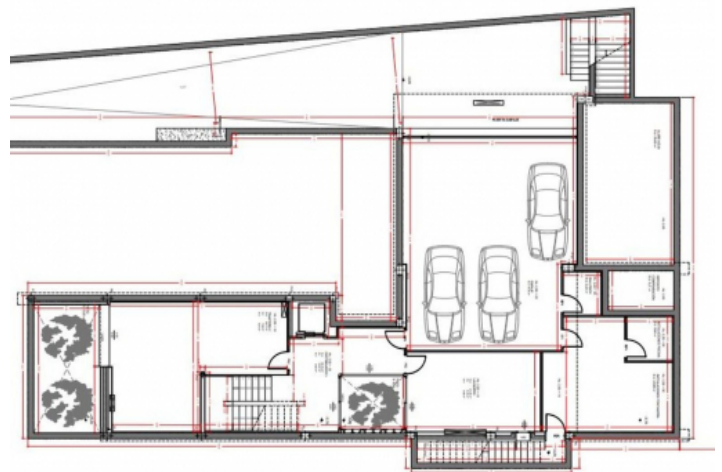
Exterior view



Floor plan first floor



Floor plan ground floor



Floor plan basement