

Selva

search for property MAL-120810



PORTA MONDIAL®

Your home. Our passion.

Luxurious finca in Selva with touristic rental license and horse paddock in a wonderful and tranquil location

constructed area: 371 m²
plot area: 14.453 m²
bedrooms: 4
bathrooms: 3
sea view: ✓

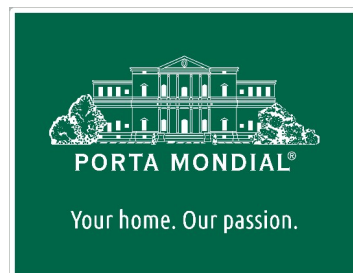
energy certificate: a

price: € 2,450,000.-



Selva

search for property MAL-120810



Details:

This enchanting country estate is situated in a wonderful corner of Selva, surrounded by majestic mountain scenery and forming an idyllic paradise in the midst of luxuriant natural surroundings.

Although perfect for lovers of nature the property also offers a coveted touristic rental license for up to 8 persons, and provides the perfect place for horse enthusiasts as it is equipped with a video-monitored paddock enclosure.

The two-story finca has a living space of 341 sqm and exudes pure luxury and refined style. On the ground floor entry is via a spacious living room with a cosy wood-burning stove, and offering views of the artistically laid out gardens. A large archway separates the living room from the elegant dining area and the modern Nolte fitted kitchen, and is seamlessly connected to a further covered terrace.

Also on this level is the master bedroom with en-suite bathroom with underfloor heating, and a dressing room.

On the upper floor there are 3 further bedrooms and a bathroom, and 2 large terraces offering breathtaking panoramic views of the Tramuntana mountains and over the horse paddock.

Everything is surrounded by well-maintained gardens housing a variety of plants and trees, including majestic palms and fragrant Mediterranean shrubs. A 30 sqm saltwater pool surrounded by an 85 sqm terrace with durable WPC-wood decking invites to relax and enjoy.

A smart-home system allows the control over the alarm system with video, air conditioning, lighting, and the electric gate from anywhere in the world, and includes control of the photovoltaic system and automatic irrigation which can also be monitored and adjusted according to the weather conditions from a smartphone.

Further exclusive features include:

- Doorbird entrance surveillance at the electric gate, controllable by app.
- Completely new irrigation system from Hunter with 5 circuits, controllable by app.
- Mitsubishi air conditioning units with automatic control.
- And very much more.

Selva

search for property MAL-120810



Location & surrounding area:

Selva is an idyllic village in the heart of Mallorca, nestled in the foothills of the Tramuntana mountains. It impresses with its traditional architecture, cobbled streets and relaxed atmosphere. The popular weekly market takes place every Wednesday, where local traders offer fresh produce, handicrafts and Mallorcan specialties - a highlight for residents and visitors alike.

Selva's central location makes it the ideal starting point for exploring the island. The town of Inca, known for its leather goods and large weekly markets, is just a 10-minute drive away. Palma airport can be easily reached in around 35 minutes by car, so Selva offers both tranquillity and excellent connections.

Selva
search for property MAL-120810



Sunny pool area



Idyllic terrace



Living area



Open dining area



Modern kitchen



Bedroom with terrace access

Selva

search for property MAL-120810



PORTA MONDIAL®

Your home. Our passion.



One of 4 bedrooms



Bedroom



One of 3 bathrooms



One of 3 bathrooms



Exterior view



Pool area

Selva
search for property MAL-120810



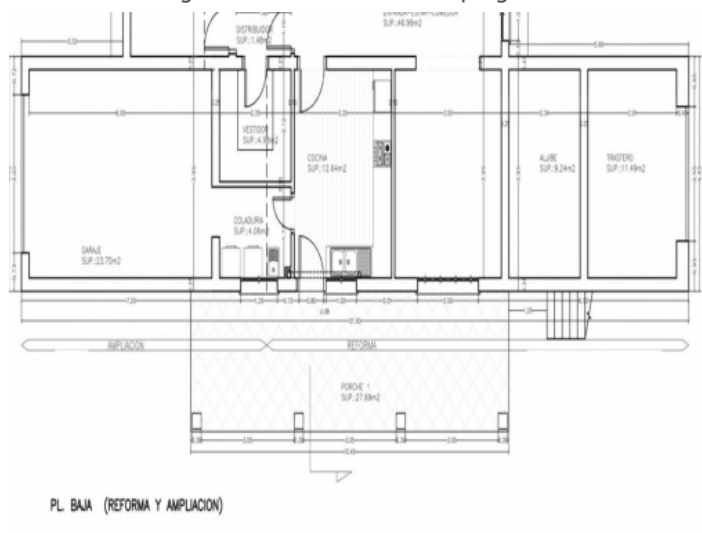
Finca and pool by night



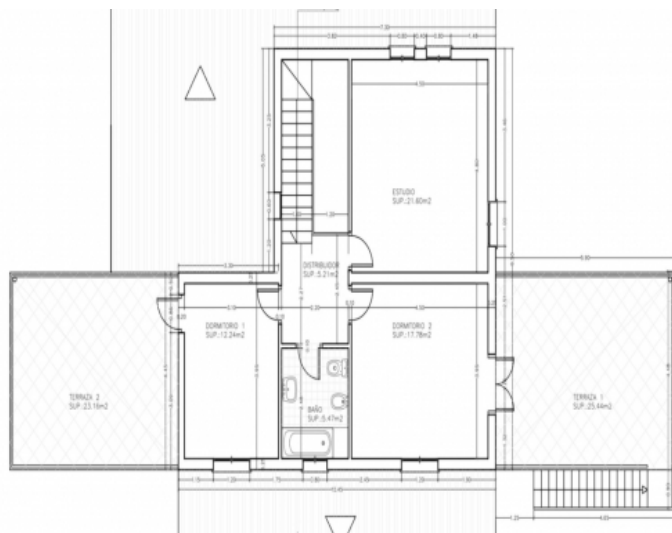
Large roof terrace with sweeping views



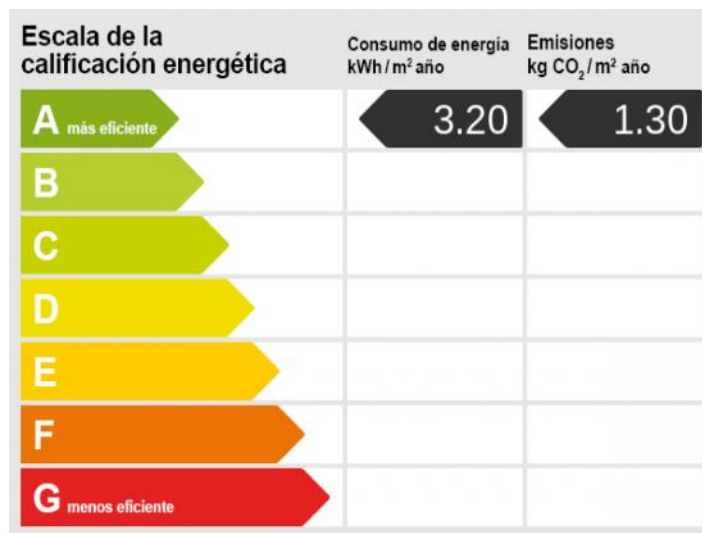
Views to the Tramuntana mountains



Groundfloor



First floor



Energieskala