

Deià

search for property MAL-119508



PORTA MONDIAL®

Your home. Our passion.

Village-house with magnificent views of the mountains and the sea in the picturesque village of Deià

constructed area: 240 m²

energy certificate: e

plot area: 285 m²

bedrooms: 5

bathrooms: 2

sea view: ✓

price: € 1,150,000.-



Deià

search for property MAL-119508



Details:

This lovely village-house has a living space of approx. 230 sqm spread over 2 levels.

Distributed over the ground floor is an open living/dining area, and a kitchen also with dining area and access to an 8 sqm conservatory. On the first floor are 4 bedrooms, 2 bathrooms, one of which is en suite, a guest WC, and a storage room.

A terrace at the front of the house offers beautiful views, and at the rear a patio allows the property to be accessed from a different street.

Further features include gas central heating in 2 bedrooms, hot/cold air conditioning, 2 fireplaces, a 14 sqm storage room, a garage of 36 sqm and a water-storage cistern.

Deià

search for property MAL-119508



Location & surrounding area:

The picturesque village of Deià on the north-west coast of Mallorca is one of the most beautiful villages in Mallorca, with views of the Mediterranean and the Tramuntana mountains which were declared by the UNESCO as a world heritage in 2010. It is considered to be the natural landscape with the largest scenic and cultural values on the island.

A stroll through Deià means walking along lanes paved in the middle ages, past old stone houses with their multi-coloured window blinds. Fruit trees, stone-oaks, palm trees and cypresses characterise the wonderful surroundings.

The tranquillity and privileged scenery has attracted artists, musicians and authors since the 19th century.

Deià

search for property MAL-119508



PORTA MONDIAL®

Your home. Our passion.



Gorgeous sweeping views to the sea



Wonderful views over Deià and the mountains



Wonderful views over Deià and the mountains



Mediterranean terrace



Mediterranean terrace



Access to the wintergarden with dining area

Deià

search for property MAL-119508



Your home. Our passion.



Access to the wintergarden with dining area



Large covered bbq area



Large covered bbq area



Living area with fireplace and terrace access



Living area with fireplace and terrace access



Living area and access to the entrance area

Deià
search for property MAL-119508



Living area and access to the entrance area



Modern spacious kitchen



Modern spacious kitchen



Further living room next to the entrance



Further living room next to the entrance



One of 5 bedrooms

Deià

search for property MAL-119508



PORTA MONDIAL®

Your home. Our passion.



One of 5 bedrooms



Bathroom with a view



Bathroom with a view



Bedroom with beautiful views



Bedroom with beautiful views



Bright bedroom with bathroom en suite

Deià

search for property MAL-119508



PORTA MONDIAL®

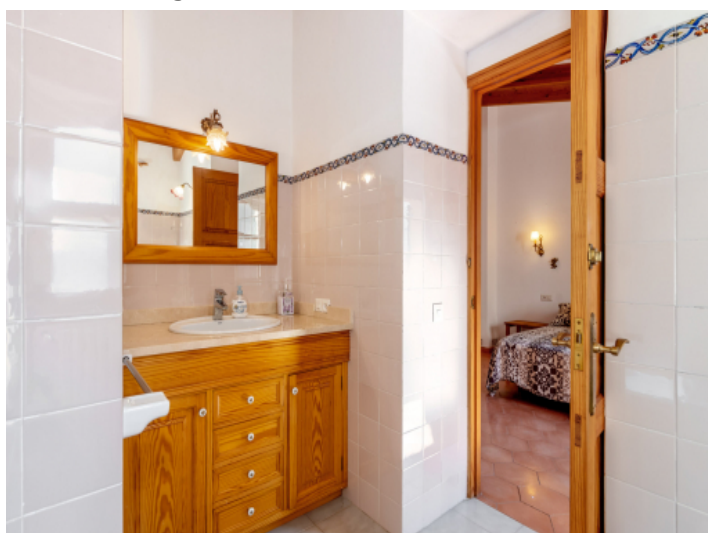
Your home. Our passion.



Bright bedroom with bathroom en suite



Simple en suite bathroom



Simple en suite bathroom



View of the house and the terrace



View of the house and the terrace

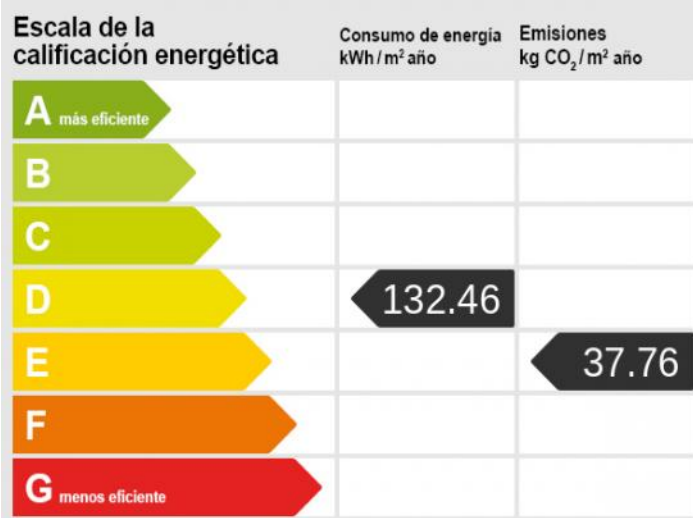


Access from the street

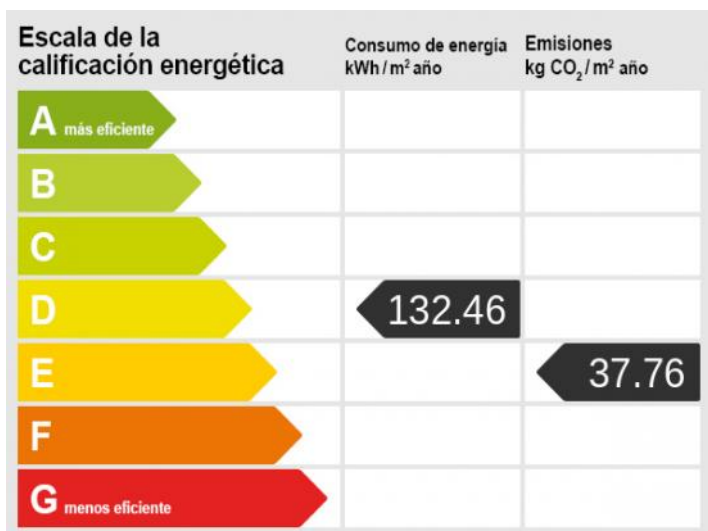
Deià
search for property MAL-119508



Access from the street



Energy certificate



Energy certificate