

Sa Pobla

search for property MAL-118028



Wonderful town house with holiday rental license in Sa Pobla

constructed area: 533 m²

energy certificate: in process

plot area: 331 m²

bedrooms: 6

bathrooms: 4

sea view: -

price: € 1,050,000.-



Sa Pobla

search for property MAL-118028



Details:

This renovated 6-bedroom home in Sa Pobla offers a unique blend of traditional Mallorcan charm and modern convenience.

The house boasts a prime location in the heart of town, just steps away from the Plaza Major and tucked away on a quiet, pedestrian street behind the church. Original stone walls and a striking facade lend character to the property, while modern updates ensure comfort and convenience.

Spread over 3 floors, the home features a ground floor with a double bedroom and en suite, a study area, large kitchen, and open plan living/dining room leading to a terrace and private pool.

Upstairs, the first floor offers three bedrooms, one en suite, and a contemporary living room with Juliet balconies and a covered upper terrace. The second floor contains two additional bedrooms, a bathroom, and yet another living area.

This home offers ample outdoor space with sunny terraces and the coveted private pool. A hidden gem with a tourist rental license, this property is a must-see for those seeking a unique and centrally located Mallorcan experience.

Sa Pobla

search for property MAL-118028



Location & surrounding area:

Located in the heart of Mallorca, Sa Pobla is known for its fertile plains, traditional architecture and vibrant culture. This charming village offers a unique combination of rural tranquillity, although with convenient access to excellent amenities. With its proximity to beautiful beaches and the Serra de Tramuntana mountains, Sa Pobla is an ideal location for those who want to enjoy authentic Mallorcan life. The municipality is characterised by its hospitality, varied gastronomy and year-round festivals.

Property offers in and around Sa Pobla are characterised by their diversity - spacious village-houses in the town centre, surrounded by the picturesque backdrop of old Mallorcan architecture, and large country fincas typical for the flat surrounding countryside and offering fantastic views of the Sierra de Tramuntana mountain range. In addition there are the exclusive villa areas of S'Obac, Crestatx and Son Toni, which are characterised by their privacy and exclusivity, and are only a few minutes' drive from the picturesque town of Pollença. Sa Pobla, therefore, offers a unique blend of rural charm and exclusive living, ideal for those looking for the best of both worlds.

In addition, the nearest beaches of Playa de Alcúdia and Playa de Muro are just a 10-minute drive away, making Sa Pobla an ideal location for lovers of the sea and the sun. This proximity to some of Mallorca's most beautiful beaches offers the perfect balance to rural life, making property in Sa Pobla particularly attractive.

Sa Pobla

search for property MAL-118028



PORTA MONDIAL®

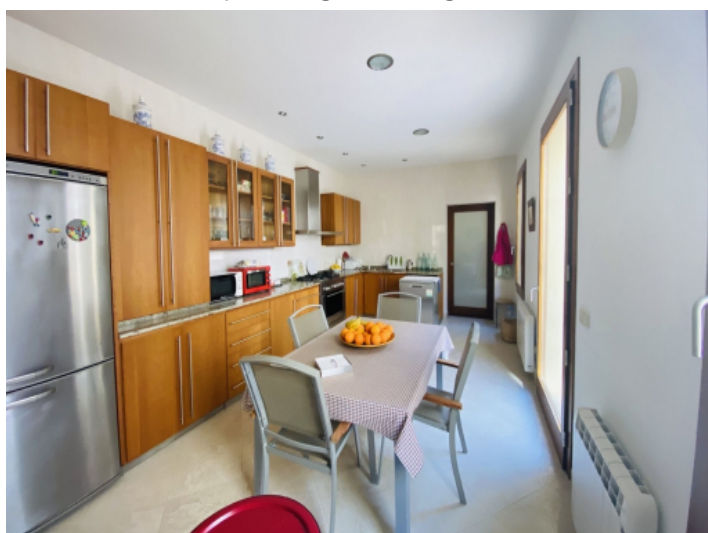
Your home. Our passion.



Open living and dining area



Upper floor



Kitchen with dining area



One of 6 bedrooms



One of 6 bedrooms



One of 6 bedrooms

Sa Pobla

search for property MAL-118028



PORTA MONDIAL®

Your home. Our passion.



One of 4 bathrooms



Lower floor



Exterior view