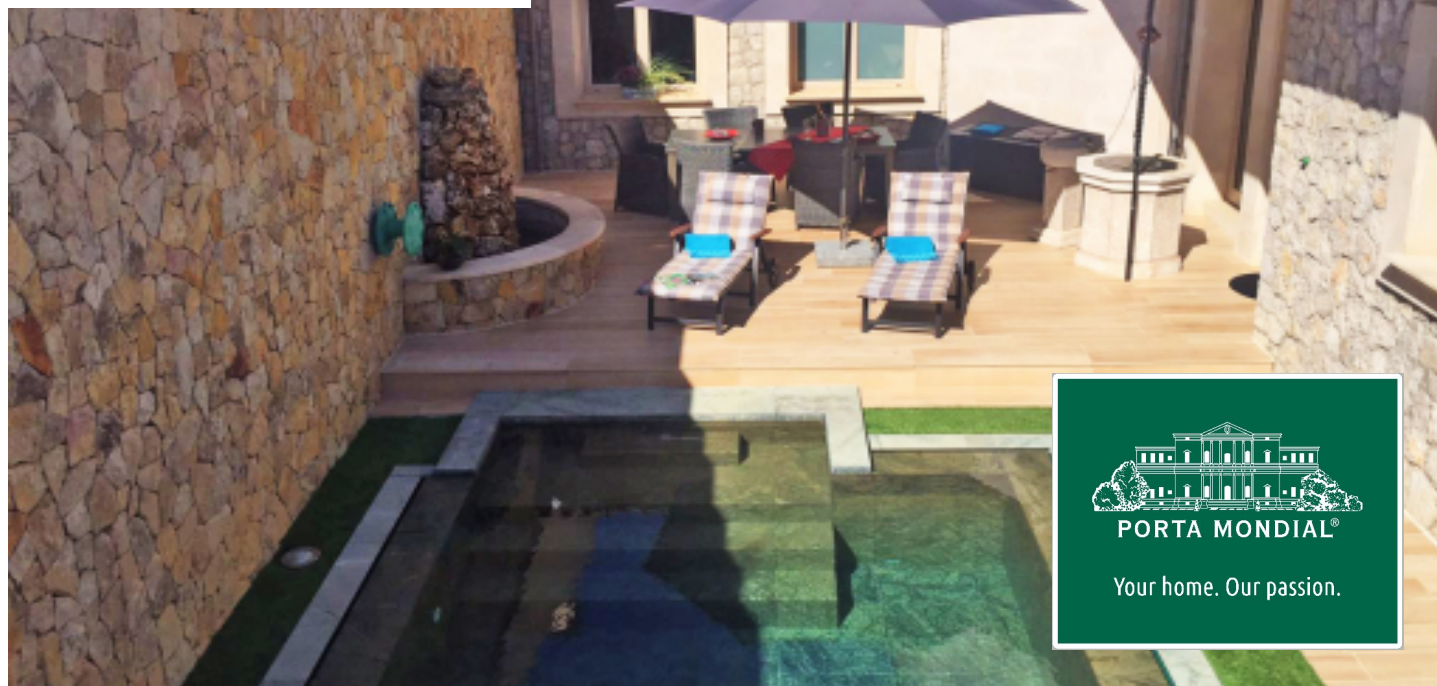


**Sa Pobla**

search for property MAL-116836



Noble town-villa with mansion-house character on the outskirts of Sa Pobla with pool and highest construction quality

constructed area: 514 m<sup>2</sup>

energy certificate: e

plot area: 590 m<sup>2</sup>

bedrooms: 5

bathrooms: 3

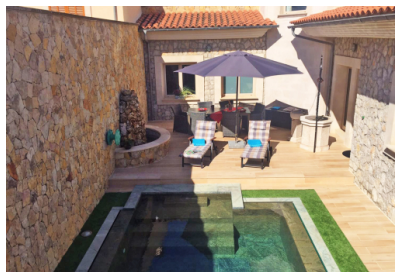
sea view: -

**price: € 2,050,000.-**



**Sa Pobla**

search for property MAL-116836



## Details:

This Mediterranean town-villa was very solidly constructed in 2004 on the outskirts of Sa Pobla by its present owners, promising a high value-stability and with many authentic details.

Distributed over the ground floor is the entrance area, a guest WC, 3 double bedrooms each with its own bathroom, a dining room, a kitchen and a large garage. In the very private and unobservable patio are seating and sun terraces, a bbq zone and the pool.

Housed on the upper floor is a bedroom, a dressing room, an open laundry room, a party room with kitchen, and a large lounge-terrace which is connected to the patio via a staircase.

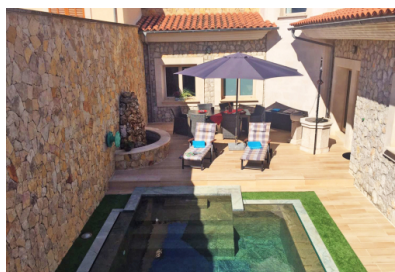
During the interior development the finest building materials were used and include marble and tropical wood for the floors, 80 cm. thick walls with excellent temperature insulation, and perfectly-handmade stucco ceilings. A large part of the furnishings originate from the well-known furniture manufacturer Pico-Living in Valencia. All carpentry was superbly carried out, and the dining room and entrance hall with their representative staircase and triple ceiling-height were adorned with hand-made crystal chandeliers - truly forming one of the many highlights of this exceptional property.

Further features include hot/cold air conditioning, double-glazed windows and doors, a fitted kitchen and the high-quality furnishings.

This very high-quality villa presents an excellent ratio between price and build quality, and this can be seen immediately during a personal viewing.

**Sa Pobla**

search for property MAL-116836



## Location & surrounding area:

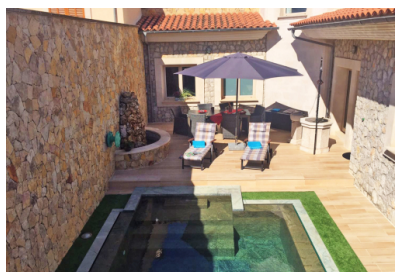
Located in the heart of Mallorca, Sa Pobla is known for its fertile plains, traditional architecture and vibrant culture. This charming village offers a unique combination of rural tranquillity, although with convenient access to excellent amenities. With its proximity to beautiful beaches and the Serra de Tramuntana mountains, Sa Pobla is an ideal location for those who want to enjoy authentic Mallorcan life. The municipality is characterised by its hospitality, varied gastronomy and year-round festivals.

Property offers in and around Sa Pobla are characterised by their diversity - spacious village-houses in the town centre, surrounded by the picturesque backdrop of old Mallorcan architecture, and large country fincas typical for the flat surrounding countryside and offering fantastic views of the Sierra de Tramuntana mountain range. In addition there are the exclusive villa areas of S'Obac, Crestatx and Son Toni, which are characterised by their privacy and exclusivity, and are only a few minutes' drive from the picturesque town of Pollença. Sa Pobla, therefore, offers a unique blend of rural charm and exclusive living, ideal for those looking for the best of both worlds.

In addition, the nearest beaches of Playa de Alcúdia and Playa de Muro are just a 10-minute drive away, making Sa Pobla an ideal location for lovers of the sea and the sun. This proximity to some of Mallorca's most beautiful beaches offers the perfect balance to rural life, making property in Sa Pobla particularly attractive.

Sa Pobla

search for property MAL-116836



PORTA MONDIAL®

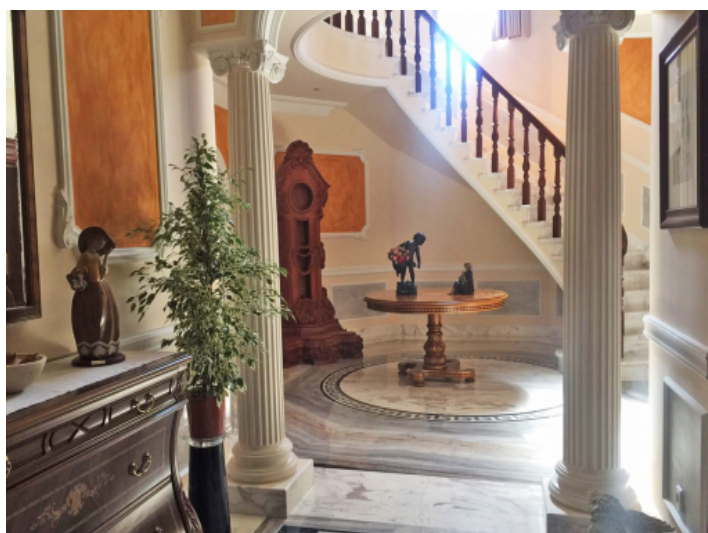
Your home. Our passion.



Exterior view of the house



Large sunny terrace



Impressive entrance area



Rustic living area

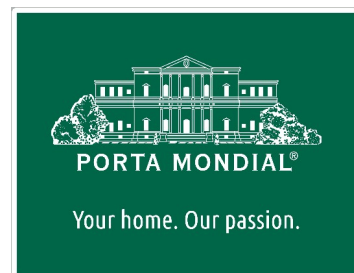
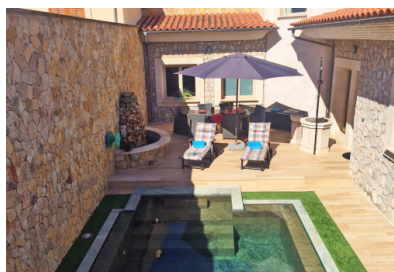


Modern kitchen with cooking island



Cozy living area

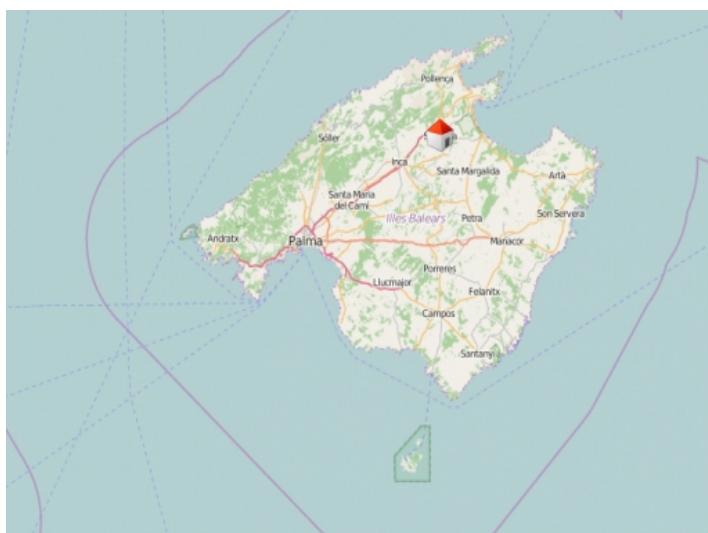
Sa Pobla  
search for property MAL-116836



One of 3 bedrooms



Covered dining and barbecue area



Sa Pobla