

**Santanyi**

search for property MAL-078000

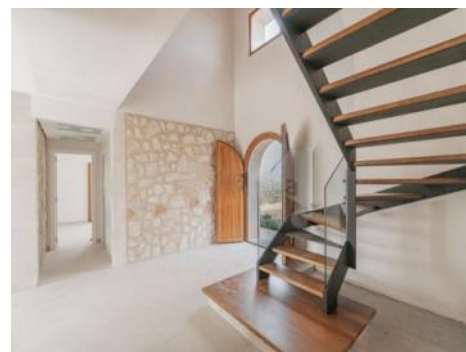


PORTA MONDIAL®

Your home. Our passion.

## Modern newly built finca near Santanyi

constructed area:	270 m <sup>2</sup>	energy certificate:	in process
plot area:	22.500 m <sup>2</sup>		
bedrooms:	4		
bathrooms:	4		
sea view:	-	price:	€ 2,675,000.-



## Santanyi

search for property MAL-078000



### Details:

A newly built finca for sale near Santanyi, combining modern living with Mediterranean charm. The property sits on a plot of approximately 22,500 m<sup>2</sup> and offers great privacy within a typical Mallorcan landscape.

The house was built by a renowned construction company to high quality standards and has been ready for occupancy since 2024.

The living area of approximately 270 m<sup>2</sup> is distributed over 2 floors plus a basement level of around 40 m<sup>2</sup>. The ground floor features a spacious living and dining area with a modern, fully equipped kitchen, utility and technical rooms, as well as a bedroom with en-suite bathroom.

From the living area, there is direct access to the surrounding terraces overlooking the garden and the large pool with relaxation area.

The upper floor offers 3 additional bedrooms, each with its own bathroom, 2 of them also featuring bathtubs and private dressing areas. Two bedrooms have access to a terrace with wide views over the surrounding landscape and olive groves.

Features include underfloor heating powered by a biomass system, high-quality air conditioning, double glazing, utility room, technical room, a fully equipped kitchen, and a spacious pool area.

**Santanyi**

search for property MAL-078000



## Location & surrounding area:

The finca is located in a quiet rural setting near Santanyi in the sought-after southeast of Mallorca. The location offers a high level of privacy while still providing easy access to the lively town center with its restaurants, cafés, boutiques, and popular weekly market.

Numerous beautiful coves and beaches can be reached within a few minutes by car, while the surrounding landscape of fields, almond, and olive trees conveys authentic Mallorcan charm.

Despite the peaceful surroundings, shopping facilities, medical services, and good transport connections are easily accessible. Palma and the airport can be reached in approximately 40–45 minutes.

The location therefore combines peace, nature, and privacy with proximity to one of the island's most charming towns, making it ideal both as a holiday home and for permanent living.



Santanyi  
search for property MAL-078000



PORTA MONDIAL®

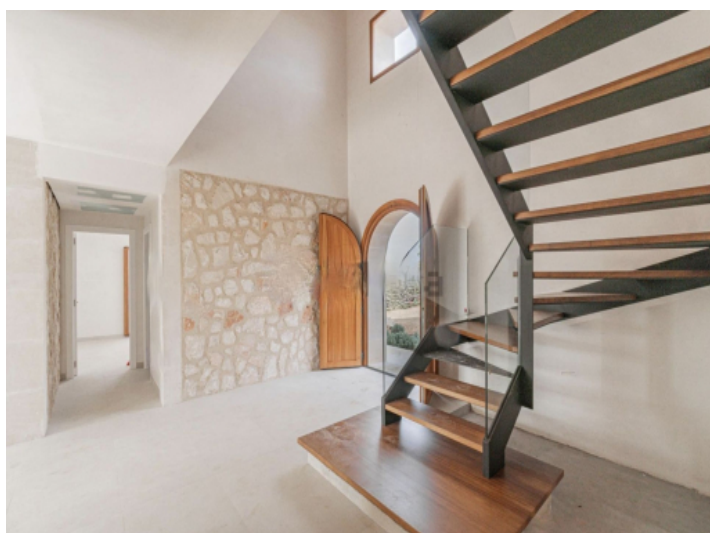
Your home. Our passion.



Garden view



Front view



Entrance hall and stairwell



Living and dining room



Kitchen with kitchen island



Living and dining room



**Santanyi**  
search for property MAL-078000



Your home. Our passion.



Masterbedroom



Masterbedroom



Second bedroom



En suite bathroom, second bedroom



Master bedroom on the left and third bedroom on the right



View from the terrace

**Santanyi**  
search for property MAL-078000



PORTA MONDIAL®

Your home. Our passion.



Garden view