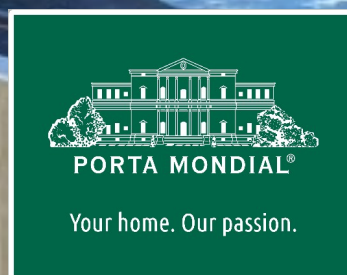


Puntillo del Sol
search for property TEN-400048



High quality 3 bedroom apartment with sea views until Puerto de la Cruz and mount Teide

constructed area: 75 m²
bedrooms: 2
bathrooms: 1
balcony/terrace: -
sea view: ✓

swimming pool: -
energy certificate: in process

price: € 168,000.-



Puntillo del Sol

search for property TEN-400048



Details:

The urbanization Puntillo del Sol is located at one of the sunniest coastlines on Tenerife's beautiful north shore. The fantastic panorama of the rough cliff line, Puerto de la Cruz, mount Teide and the Orotava valley is one of the most beautiful views Tenerife has to offer - in the daytime, at sunset or by night, when the city's sea of light create a romantic atmosphere. The well-maintained building which has recently been equipped with new, modern elevators, the good link to the highway and a bar and a supermarket in the building next door contribute to the comfort and attractiveness of this property - Not only for the own use but also for potential renting.

The apartment convinces with a modern and elegant décor, a functional room layout and with its two separate bedrooms, which is very rare in this location. The construction area of about 94 m² includes the terrace with 19 m², that comes with a washing machine and large cupboards for ample storage room. The living room, that is furnished with bright sofas and equipped with textured wallpapers, is through large sliding doors directly connected to the terrace with the above mentioned stunning views. Two large blinds create a pleasant shady spot on hot summer days. The contemporary designed kitchen - equipped with exhaust hood, ceramic stove, microwave and an extra-large fridge/freezer - fits perfectly into the elegant overall appearance of the home.

The two spacious bedrooms with laminate floors feature large built-in wardrobes. One of them is connected to the terrace as well; also by large sliding glass doors with white coated aluminium frames and double glazing. The bathroom offers among others a washing basin with integrated vanity unit, a large mirror, a bathtub, a WC and a bidet. In addition to the bathroom, the apartment offers a guest toilet with exterior window.

In 2009 all electric installations and water pipes were renewed. A large parking area in front of the building provides sufficient parking facilities. From the back side, the building can be accessed by a levelled entrance. The apartment is fully furnished for sale.

Puntillo del Sol

search for property TEN-400048



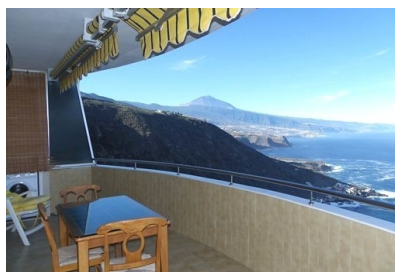
Location & surrounding area:

La Matanza de Acentejo is located in the middle of the sunniest region in the north of the island of Tenerife. This is especially true for houses and villas in lying coastal areas in Puntillo del Sol and the environment of El Caletón below the highway TF-5, which guarantees fast connections to Puerto de la Cruz, to the North airport and Santa Cruz. But the traditional village of La Matanza benefits as well from the fact that the clouds emit mostly in the higher altitudes their precious wet, so that the very good soils of the vineyards supply excellent results. Restaurants where you can taste these wines, there are many, and also for shopping, healthcare, and other things of everyday life one is well taken care of in the community.

As the ground increases from the sea to 1500 meters height on the Cumbre, there is no ridge blocking the view parallel to the coast. So you have almost all-around the typical postcard view of Mount Teide and next to the right a coastal strip that provides a romantic backdrop for beautiful sunsets in the sea.

The nearest beach is Playa Bolullo, which often is described as the most beautiful of Tenerife.

Puntillo del Sol
search for property TEN-400048



PORTA MONDIAL®

Your home. Our passion.



The living room with dining area and access to the terrace



The open, fully equipped kitchen



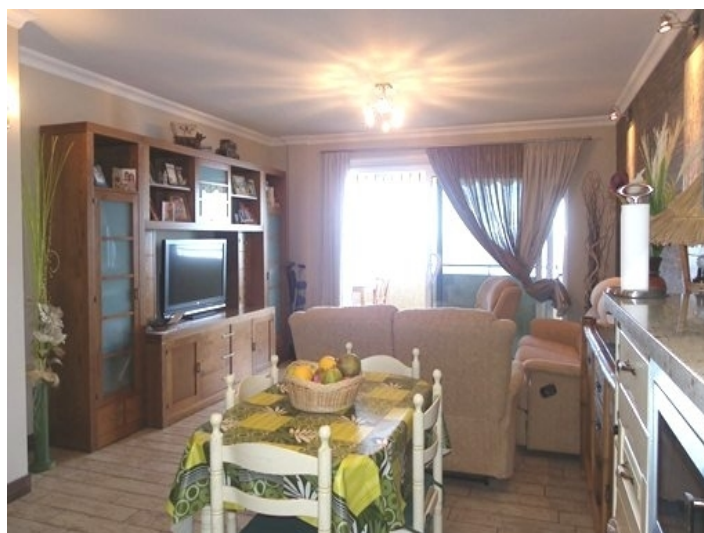
One of the bedrooms with double bed and large wardrobe



The living room with view to the kitchen



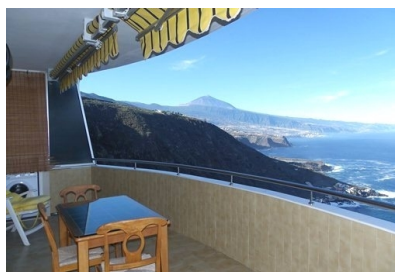
The bathroom with bathtub



Alternative view of the living room

Puntillo del Sol

search for property TEN-400048



PORTA MONDIAL®

Your home. Our passion.



The master bedroom with ocean view and balcony access



The second bedroom



The guest bathroom



The stunning view from the balcony