

## Callao Salvaje

search for property TEN-108092



PORTA MONDIAL®

Your home. Our passion.

### Luxury apartment with private pool and sea views at Iconic, Rokabella

constructed area:	99 m <sup>2</sup>	swimming pool:	✓
bedrooms:	2	energy certificate:	C
bathrooms:	2		
balcony/terrace:	✓		
sea view:	✓	<b>price:</b>	<b>€ 1,185,000.-</b>



## Callao Salvaje

search for property TEN-108092



### Details:

Discover this recently completed elegant home, located in Rokabella, a new residential area that is part of Callao Salvaje, known for its relaxed atmosphere and open ocean views.

Located within the modern Iconic residential complex, this 2 bedroom, 2 bathroom apartment has been designed for a contemporary seaside lifestyle and features a bright open concept layout, where the fully equipped modern kitchen integrates with the living-dining room. The high quality finishes and carefully selected furnishings create a comfortable and elegant ambiance throughout.

Outside, a large private terrace becomes one of the main attractions, offering stunning frontal sea views and the perfect environment to enjoy the outdoors, with unforgettable sunsets over La Gomera as a backdrop. The property also has a private pool, reinforcing the feeling of privacy and exclusivity.

For greater comfort and functionality in day to day life, the apartment has a separate laundry room, as well as a large parking space and a storage room.

The Iconic residential complex enjoys a particularly attractive location, just a few minutes drive from Costa Adeje, its beaches, restaurants, shopping areas and lively atmosphere, as well as a wide range of leisure activities, allowing you to enjoy a quiet environment without sacrificing comfort.

A unique opportunity to acquire a high quality property in one of the most sought after coastal areas in the south of Tenerife, ideal as a permanent residence, second home or investment.

## Callao Salvaje

search for property TEN-108092



### Location & surrounding area:

Adeje includes numerous popular settlements on the southwest coast of Tenerife, which are known in their entirety and together with the local coastline as Costa Adeje. Under the protection of the volcano Teide, which opposes the trade winds mostly coming from the northeast, the climate is very sunny and the sunsets are even more impressive with the neighboring island of La Gomera in the background.

On this coast, there are many beaches with the best opportunities for swimming or water sports, from Playa del Duque, Playa de Fañabe, Playa de Torviscas, Playa del Bobo, Playa de las Cuevitas and Playa de Troya up to Playa de las Américas. The marina of Puerto Colón is also a starting point for trips to whale watching, the cliffs of Los Gigantes (max. height 638 meters) and Masca Gorge. Not far from the beaches nestled harmoniously into the landscape, is the 27-hole golf course Golf Costa Adeje, on which to the viewer admires - directly adjacent to the green of the course - the deep blue sea with La Gomera in the background.

The Costa Adeje has excellent infrastructure, numerous shops, restaurants and a lot of special attractions like the Aqualand and Siam Park. This will benefit owners of the many apartments, houses and villas in the region, but also the community Adeje, which presents itself in bright colors with its beautiful old church, town hall, elegant Canarian wooden balconies and around his cozy Plaza. Other cultural attractions invite you to a contemplative walk through Adeje, such as the cultural center or the large statues of Beethoven and the Guanche-King "El Gran Tinerfe".

# Callao Salvaje

search for property TEN-108092



PORTA MONDIAL®

Your home. Our passion.



Pool



Pool



Terrace



Terrace



Living area



Living and dining area

# Callao Salvaje

search for property TEN-108092

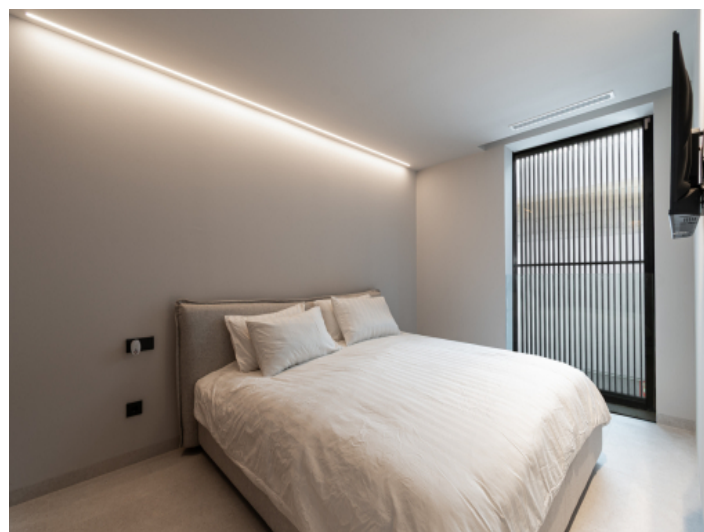


PORTA MONDIAL®

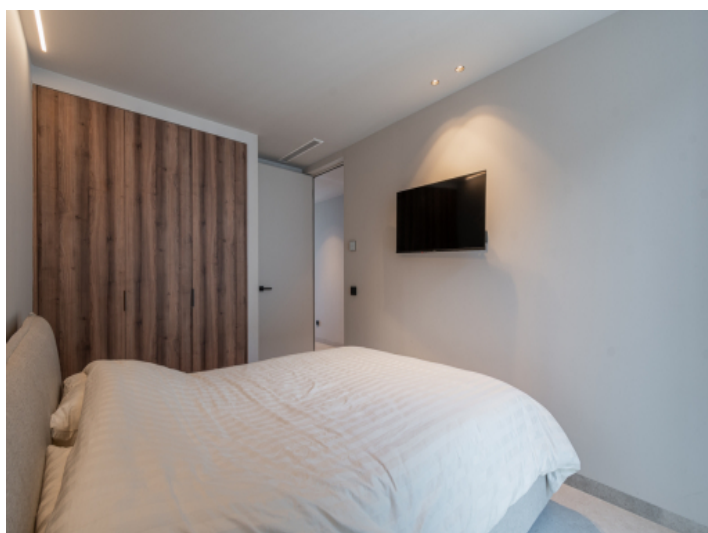
Your home. Our passion.



Kitchen



Bedroom



Bedroom



Bathroom



Bathroom



Terrace