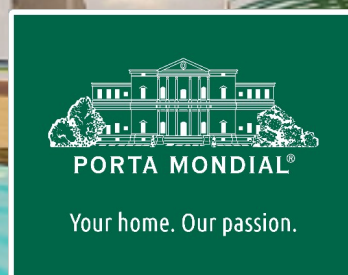
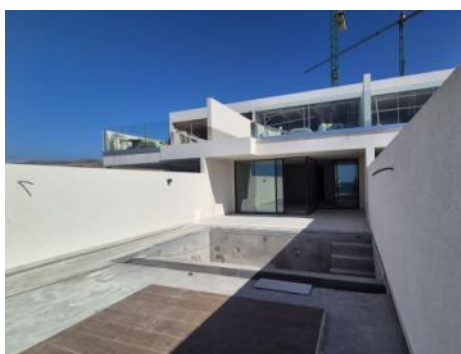


**Callao Salvaje**  
search for property TEN-108003



## First occupancy apartment with sea view in the residential complex Iconic - Rokabella

constructed area:	201 m <sup>2</sup>	swimming pool:	✓
bedrooms:	2	energy certificate:	in process
bathrooms:	2		
balcony/terrace:	✓		
sea view:	✓	<b>price:</b>	<b>€ 1,020,000.-</b>



**Callao Salvaje**

search for property TEN-108003



## Details:

This luxurious 2 bedroom apartment is located in the first phase of the coveted new development project "Iconic". Completion is scheduled for May 2025, offering a rare opportunity to acquire an almost move-in ready property in a prime beachfront location.

The apartment features 2 bedrooms, 2 bathrooms (one en-suite), a fully equipped open plan kitchen and a spacious living-dining room with stunning sea views. The adjacent terrace serves as a private oasis with ample space for relaxing and sunbathing. Particularly noteworthy is the private heated infinity pool.

**Callao Salvaje**

search for property TEN-108003



## Location & surrounding area:

Adeje includes numerous popular settlements on the southwest coast of Tenerife, which are known in their entirety and together with the local coastline as Costa Adeje. Under the protection of the volcano Teide, which opposes the trade winds mostly coming from the northeast, the climate is very sunny and the sunsets are even more impressive with the neighboring island of La Gomera in the background.

On this coast, there are many beaches with the best opportunities for swimming or water sports, from Playa del Duque, Playa de Fañabe, Playa de Torviscas, Playa del Bobo, Playa de las Cuevitas and Playa de Troya up to Playa de las Américas. The marina of Puerto Colón is also a starting point for trips to whale watching, the cliffs of Los Gigantes (max. height 638 meters) and Masca Gorge. Not far from the beaches nestled harmoniously into the landscape, is the 27-hole golf course Golf Costa Adeje, on which to the viewer admires - directly adjacent to the green of the course - the deep blue sea with La Gomera in the background.

The Costa Adeje has excellent infrastructure, numerous shops, restaurants and a lot of special attractions like the Aqualand and Siam Park. This will benefit owners of the many apartments, houses and villas in the region, but also the community Adeje, which presents itself in bright colors with its beautiful old church, town hall, elegant Canarian wooden balconies and around his cozy Plaza. Other cultural attractions invite you to a contemplative walk through Adeje, such as the cultural center or the large statues of Beethoven and the Guanche-King "El Gran Tinerfe".



Callao Salvaje

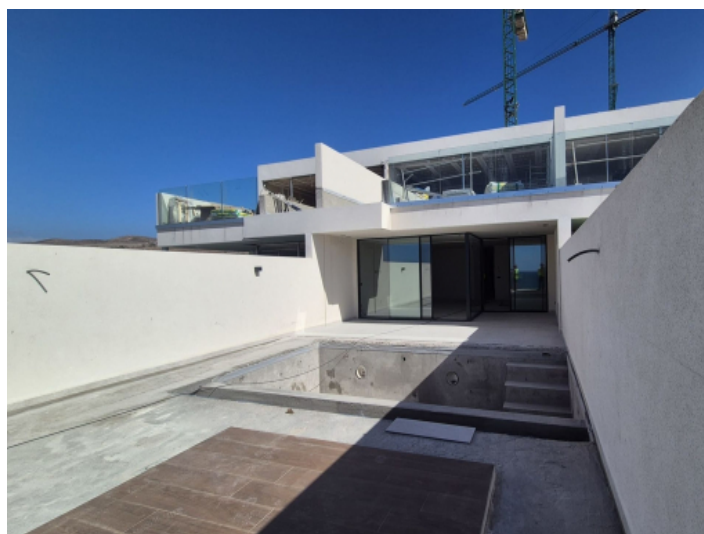
search for property TEN-108003



Your home. Our passion.



Project "Iconic"



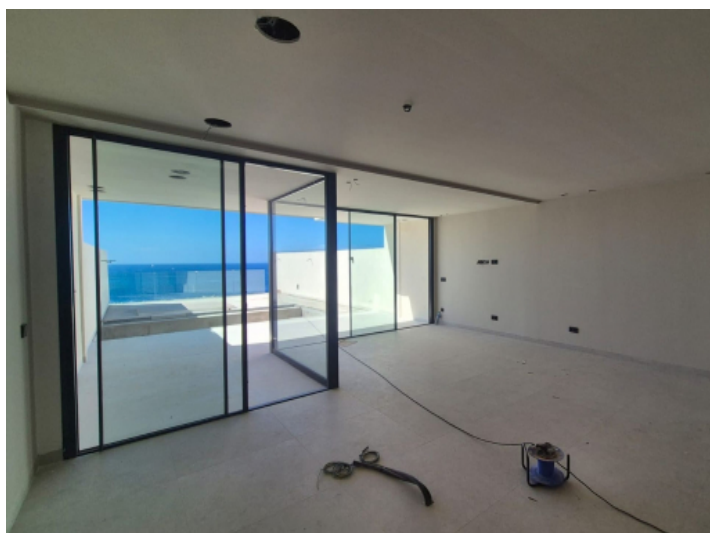
Terrace



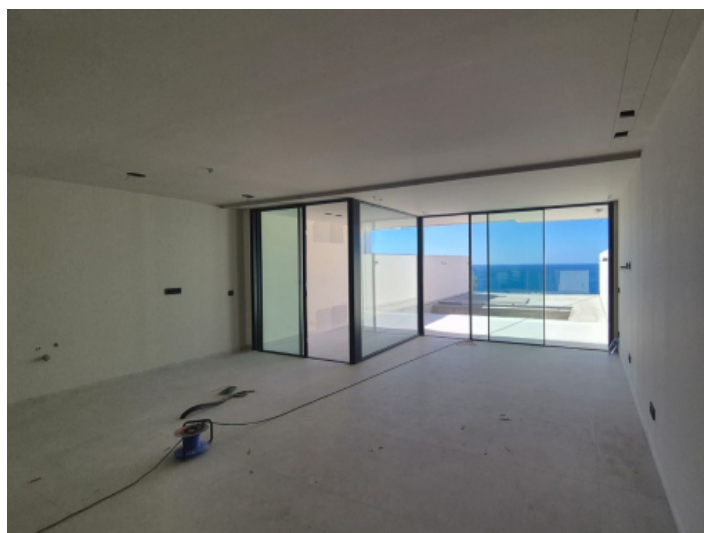
Sea views



Sea views



Living area



Living area



Callao Salvaje

search for property TEN-108003



PORTA MONDIAL®

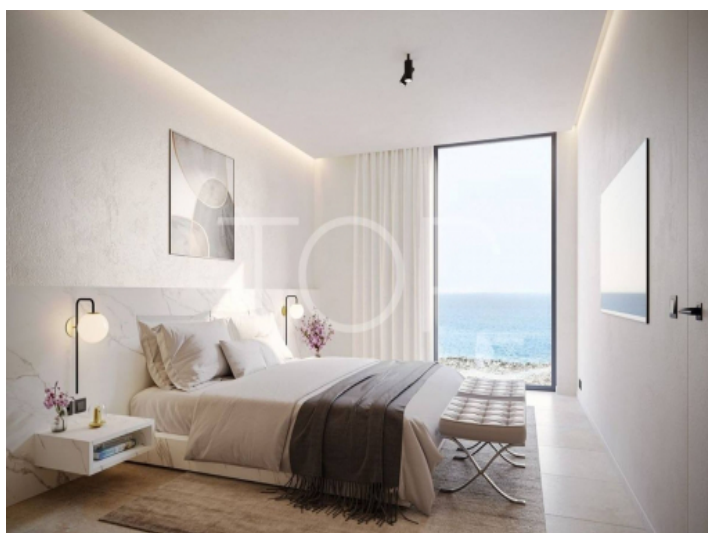
Your home. Our passion.



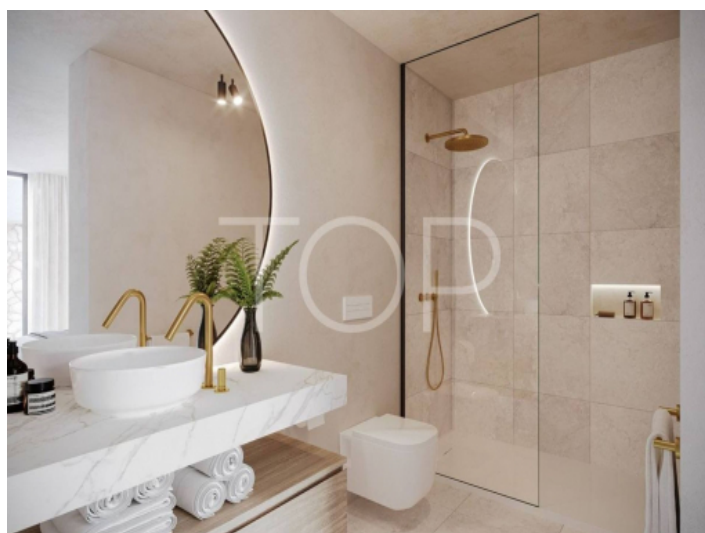
Kitchen



Bedroom



Bedroom



Bathroom



Bathroom