

Son Armadams

search for property MAL-117091



Impressive luxury-penthouse with roof terrace, pool, garage and sea views in Son Armadams, Palma

constructed area: 350 m²

bedrooms: 3

bathrooms: 3

balcony/terrace: ✓

sea view: ✓

swimming pool: ✓

energy certificate: in process

price: € 1,950,000.-



Son Armadams

search for property MAL-117091



Details:

This exceptional, modern, first-occupancy penthouse is situated in a building with only 4 living units, and offers the highest quality and maximum comfort in combination with lovely sea views.

Bright, minimalist rooms characterize this 102 sqm property and it is still possible to choose between 2 or 3 bedrooms.

The living/dining room shares a large area with the American kitchen, creating spaciousness and brightness, and there are also 2 bathrooms, a guest WC and a utility room.

The private, very impressive roof terrace has an area of 100 sqm with a bbq zone and ample space for leisure or chill-out areas where the Mediterranean climate can be enjoyed to the full. This magnificent terrace also holds a superb, 35 sqm pool which will satisfy the requirements of even the most demanding occupants.

Further features include 2 garage parking spaces, hot/cold integrated air conditioning, under-floor heating, house automation, double glazing, alarm system and natural wood and stone floors.

Son Armadams

search for property MAL-117091



Location & surrounding area:

If you are looking for a green but centrally-situated area in the town of Palma de Mallorca then Son Armadams is the place for you. The district is surrounded by a wonderful park on a hill which leads to Bellver castle from where breathtaking views over the whole of the bay of Palma can be enjoyed. The park is also an ideal place for all types of outdoor activities, and in the inner courtyard of the castle all kinds of concerts take place during the summer months. The upper part is a quiet residential area and was one of the most exclusive in Palma with its impressive villas. Today it is a privileged neighbourhood for families wishing to live in a quiet area, but still be within easy reach of all amenities.

Son Armadams is only a few minutes away from the trendy district of Santa Catalina, one of the town's most popular places for gastronomy and nightlife. The Paseo Marítimo and the harbour, where lovely walks and the nightlife can be enjoyed, is also only a stone's throw away.

Son Armadams is only a few minutes by foot from the historic town centre and its main streets, where the best shopping possibilities on the island can be found. It is a residential oasis directly in the town and an excellent choice when seeking peace and quiet, although still wishing to be within easy reach of all facilities.

Son Armadams

search for property MAL-117091



PORTA MONDIAL®

Your home. Our passion.



Pool and sun terrace



Pool and sun terrace



Lounge terrace



Lounge terrace and dining area



Living and dining area



Living and dining area

search for property MAL-117091



PORTA MONDIAL®

Your home. Our passion.



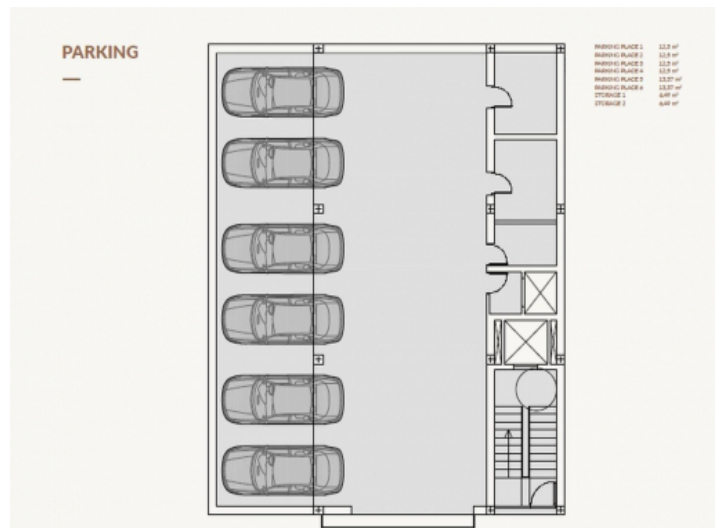
Dining area and kitchen

Bathroom



Exterior view

Floor plan



Roof terrace

Parking

PORTA MALLORQUINA • C./ COLOM 20 2º, 07001 PALMA, SPAIN
TEL.: +34 971 698 242 • INFO@PORTAMALLORQUINA.COM • WWW.PORTAMALLORQUINA.COM

Son Armadams

search for property MAL-117091



PORTA MONDIAL®

Your home. Our passion.



Location